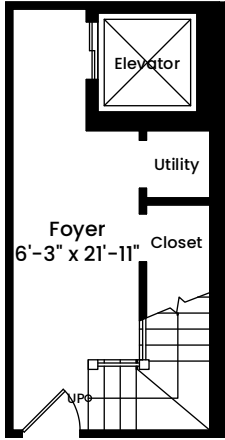
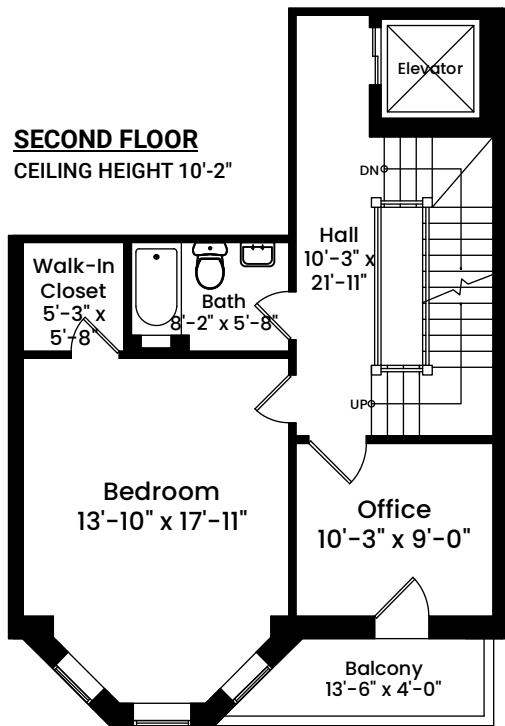


323 Commonwealth Avenue, Unit 2 | Boston, MA 02115

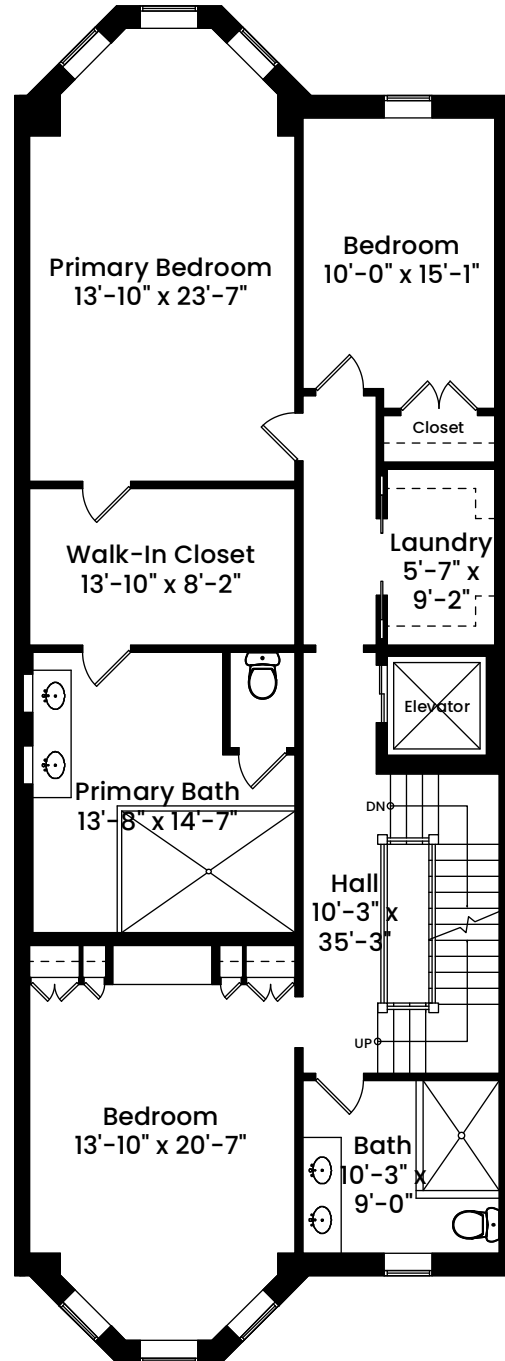
FIRST FLOOR CEILING HEIGHT 11'-9"



SECOND FLOOR CEILING HEIGHT 10'-2"



THIRD FLOOR CEILING HEIGHT 9'-11"

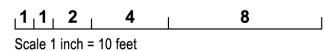
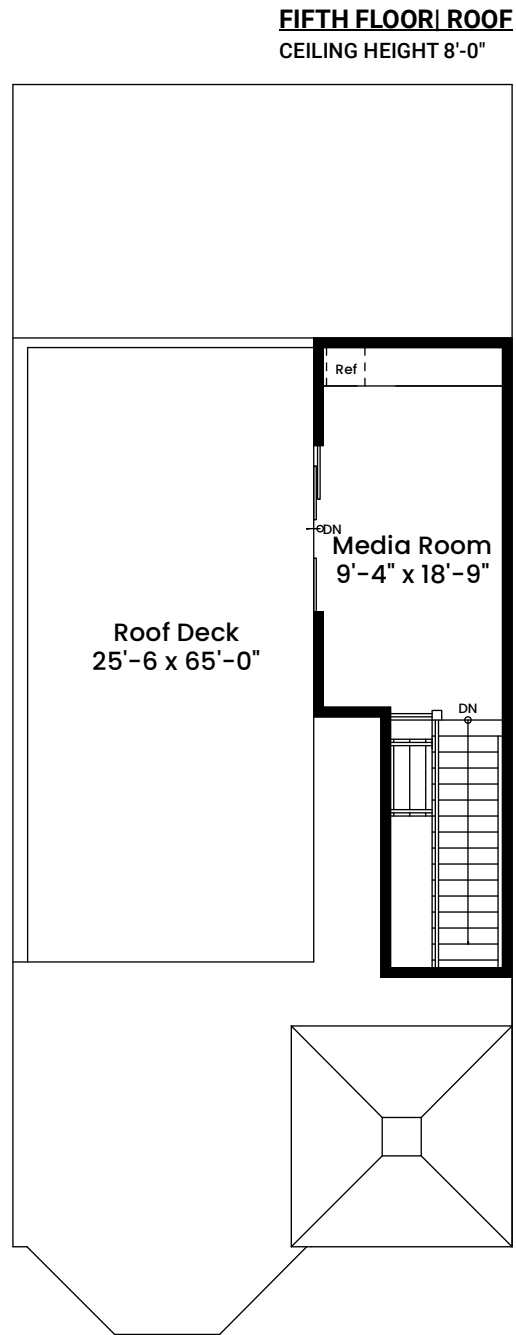
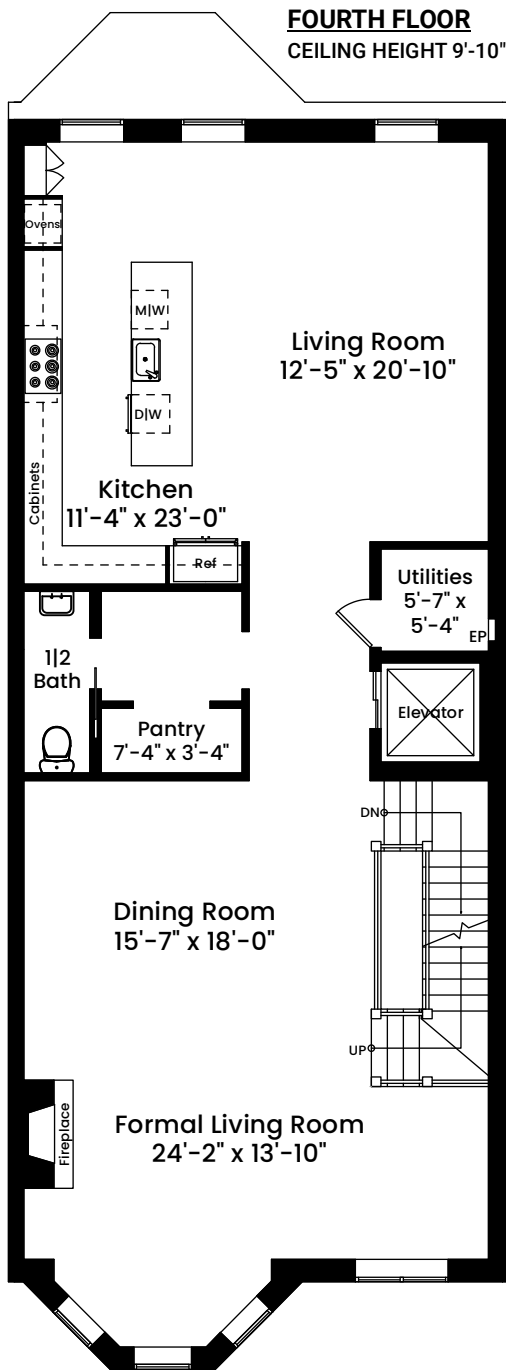


1 1 2 4 8
Scale 1 inch = 10 feet

Architecturally drafted in January 2026 by:
National Floor Plans (800) 328-0217
Associate Member | American Institute of Architects
Contact www.nationalfloorplans.com for .dwg AutoCAD files
or square footage questions about this property.

Dimensions are not guaranteed and are provided for informational purposes only.
Individual room dimensions are not used to calculate overall square footage.
National Floor Plans follows ANSI guidelines for calculating square footage.
Unit area has been calculated to the centerline of demising and exterior walls.

323 Commonwealth Avenue, Unit 2 | Boston, MA 02115



Architecturally drafted in January 2026 by:
 National Floor Plans (800) 328-0217
 Associate Member | American Institute of Architects
 Contact www.nationalfloorplans.com for .dwg AutoCAD files
 or square footage questions about this property.

Dimensions are not guaranteed and are provided for informational purposes only.
 Individual room dimensions are not used to calculate overall square footage.
 National Floor Plans follows ANSI guidelines for calculating square footage.
 Unit area has been calculated to the centerline of demising and exterior walls.